



EVER BRIGHT OPTO-ELECTRONICS CO., LIMITED

ADD: #202-72, Yuan Shan Bei Li, Huli District, Xiamen, China

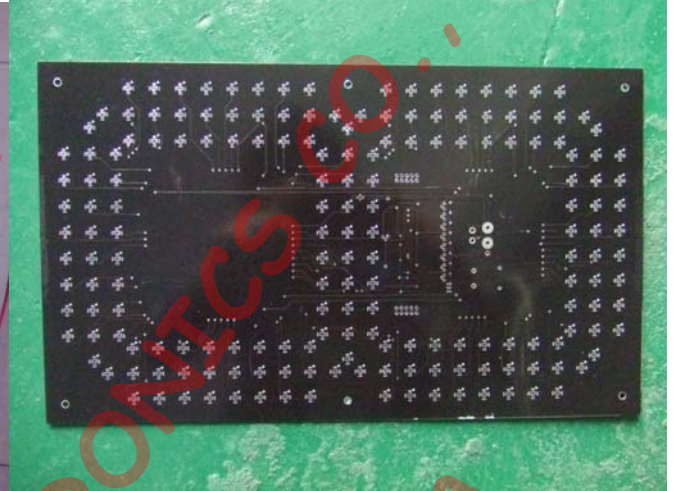
TEL: +86-592-5628 225

FAX: +86-592-5628 225

Website: www.eb-led.com

E-mail: sally0592@gmail.com

## LED Digital Sign Specification



Digital Height	Cabinet Reference Size (H*W*D)	Weight (kg)	Power Requirement
8"	9.75"x30"x4"	11	35 watts
10"	15.7"x35.43"x4"	13.5	37 watts
12"	17.7"x37"x4"	16	40 watts
16"	21.7"x49.5"x4"	19	50 watts
20"	23.7"x57.25"x4"	24.5	65 watts
24"	29.7"x64"x4.5"	28	75 watts
32"	37.7"x74"x4.5"	31.5	85 watts

LED color	monochrome	Waterproof	IP65
Digital color selection	Red, Yellow, Green, etc.	Case color/material	Black/Aluminum
LED brightness	4000 cd/m <sup>2</sup>	Operating Temp.	-40°C~50°C
LED viewing angle	Horizontal 140 deg, vertical 60 deg	Operating voltage	120 VAC/240VAC
Dimming	Auto-dimming	Operating Humidity	5%~90%RH
Communication	Wireless Remote	Warranty	One year factory warranty
Life span	100,000 hours	MTBF	10,000 hours